



Stainsby Road, London, E14

BUTLER  STAG





# Exceptionally spacious two bedroom two bathroom split-level apartment close to Canary Wharf.



- Two Bedroom Modern Apartment
- Two Bathrooms
- Views Over Canary Wharf
- Part Furnished
- Split-Level with Two Balconies
- Well-Presented Throughout
- Close to DLR Stations
- Available from 17th September 2025

Set within this striking modern development and arranged over the third and fourth floors, the apartment offers 829 Sq/Ft of accommodation and features views over the iconic Canary Wharf skyline and the green spaces of Bartlett Park..

The property comprises of a large reception room with a balcony overlooking the park, a separate modern fully-fitted kitchen with integrated appliances, master bedroom with an en-suite shower room and a private balcony, further double bedroom, main bathroom and a guest WC.

Presented in good order, hard-wood floors run continuously throughout the property which is perfectly suited to a couple or two professional sharers.

The location is convenient for both Poplar & Langdon Park DLR stations, taking you into the City, Canary Wharf and Stratford's Westfield Shopping Centre with ease.

The area has also experienced huge regeneration projects in recent years, offering a fully-fledged arts & community centre, cafes, restaurants and the historic Crisp Street Market, all on hand.

Offered part furnished and available from 17th September 2025.

EPC Rating C  
Council Tax Band D



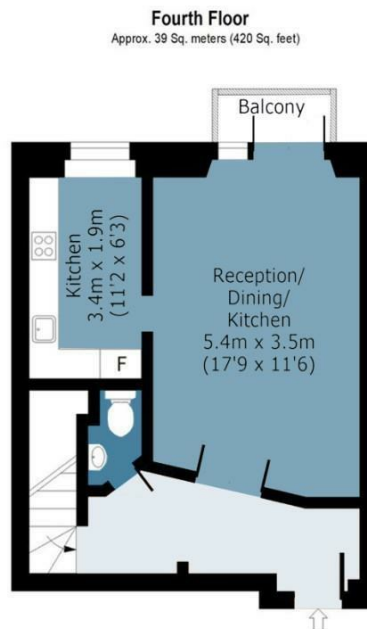
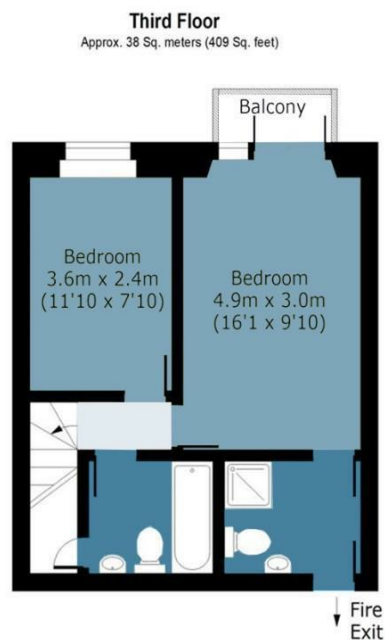




## Stainsby Road

Approx. Gross Internal Area 77 Sq M ( 829 Sq Ft )

**BUTLER & STAG**



Measurements are approximate and for illustration purposes only. While we do not doubt the accuracy and completeness, we advise you conduct a careful independent assessment of the property to determine monetary value.  
© @modephoto.uk www.modephoto.co.uk

**IMPORTANT NOTICE** - These particulars have been prepared in good faith and they are not intended to constitute part of an offer or contract. We have not performed a structural survey on this property and the services, appliances and specific fittings have not been tested. All photographs, measurements, floor plans and distances referred to are given as a guide and should not be relied upon.

**BUTLER & STAG**

☎ 020 8102 1236

🏠 508 Roman Road, Bow, London, E3 5LU

✉ bow@butlerandstag.com

[www.butlerandstag.uk](http://www.butlerandstag.uk)